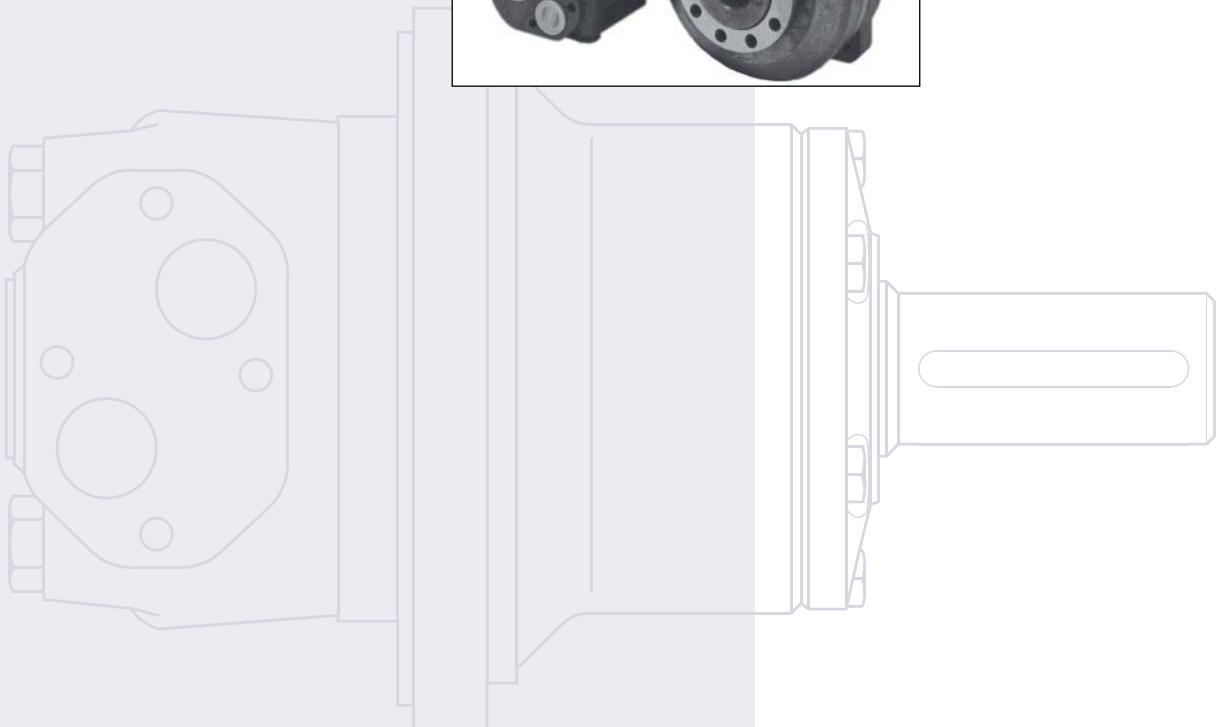




Orbital Motors
OMT FX, OMT FL
and OMT FH

Service and Parts
Manual



CONTENS

**SPECIAL VERSIONS
 COST-FREE REPAIRS**

Special versions..... 2

**SECTIONAL DRAWINGS
 SPECIAL TOOLS**

Sectional drawings 3

Special tools 4

MOTOR MODULE

Exploded view OMT FX, OMT FL and OMT FH 6

Spare parts list OMT FX, OMT FL and OMT FH 7

Dismantling 8

Cleaning, inspection, replacement and lubrication 8

Assembling 9

**BRAKE MODULE OMT FX
 BRAKE MODULE**

Exploded view OMT FX 10

Spare parts OMT FX 11

Dismantling of brake module OMT FX 13

Assembly of brake module OMT FX 13

**BRAKE MODULE OMT FL
 AND OMT FH**

Exploded view OMT FL..... 14

Spare parts OMT FL 15

Exploded view OMT FH..... 16

Spare parts OMT FH..... 17

Dismantling of brake module OMT FL and OMT FH..... 18

Assembly of brake module OMT FL and OMT FH..... 19

SPECIAL VERSIONS

The list of spare parts cannot be used when ordering parts for special OMT FX, FL and FH versions.

In this respect, please contact the sales organisation for Sauer-Danfoss.

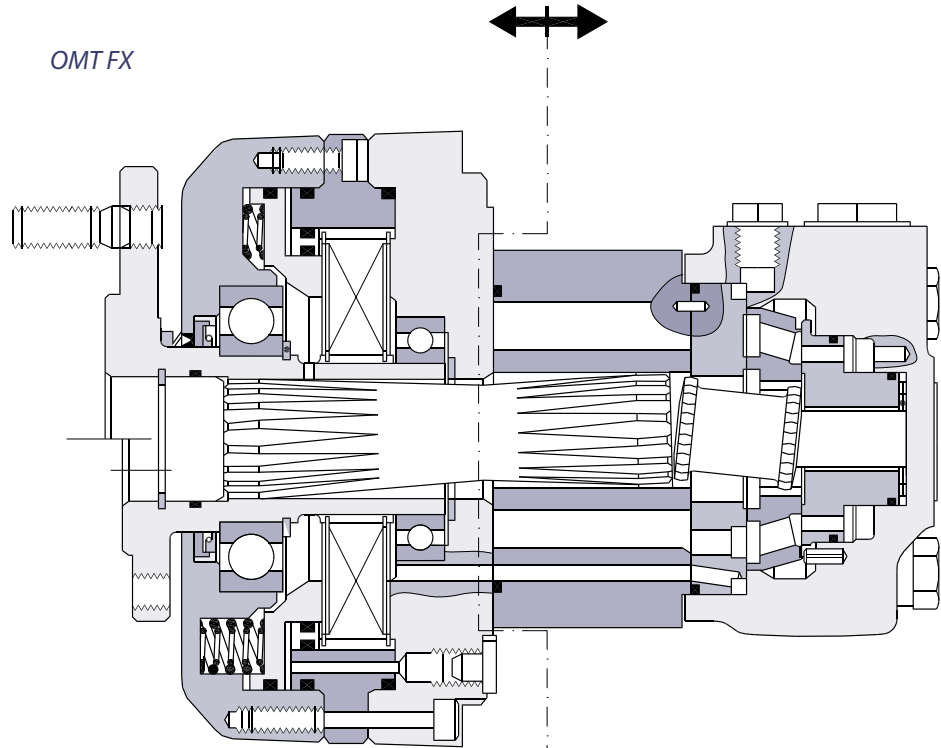
© 2005 Sauer-Danfoss. All rights reserved. Printed in Europe

Sauer-Danfoss accepts no responsibility for possible errors in catalogs, brochures and other printed material. Sauer-Danfoss reserves the right to alter its products without prior notice. This also applies to products already ordered provided that such alterations aren't in conflict with agreed specifications. All trademarks in this material are properties of their respective owners. Sauer-Danfoss and the Sauer-Danfoss logotype are trademarks of the Sauer-Danfoss Group.

Front cover illustrations: F300210 Drawing. 151-1976

SECTIONAL DRAWINGS

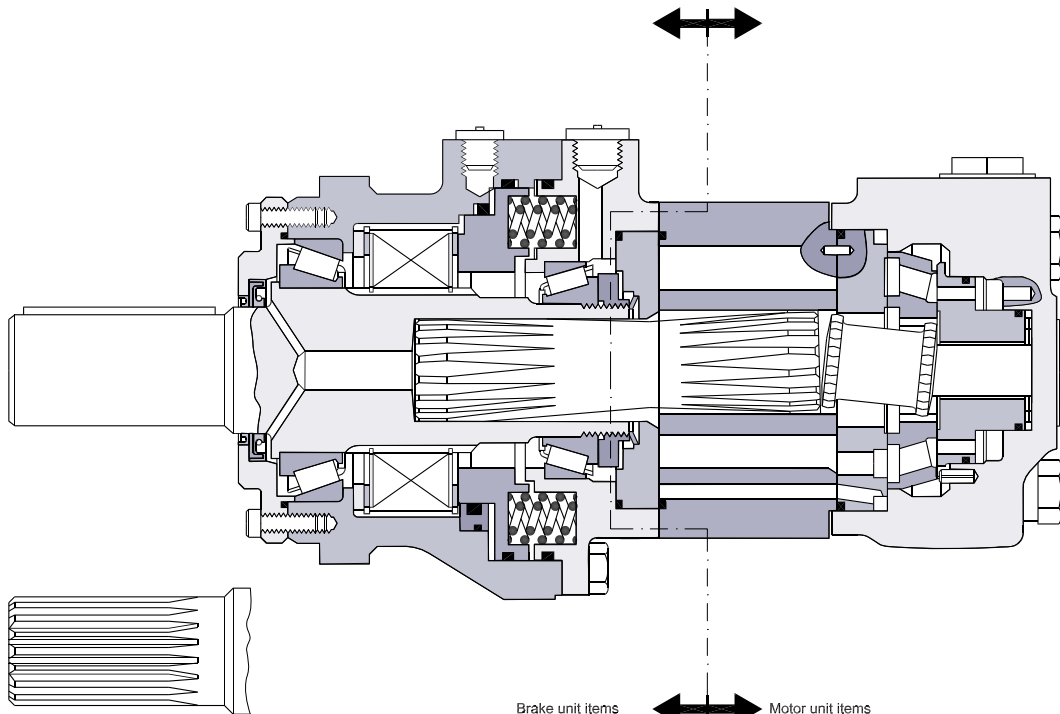
OMT FX



Brake unit items ↔ Motor unit items

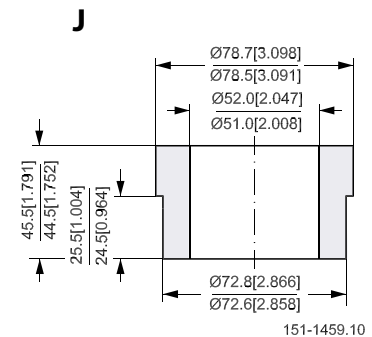
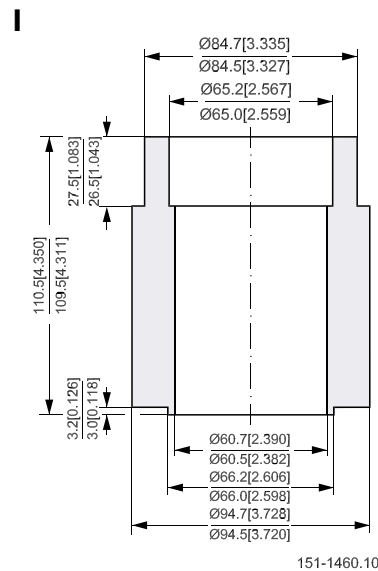
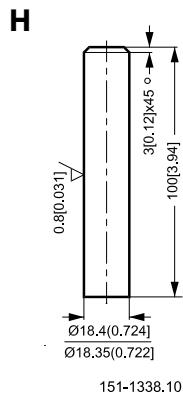
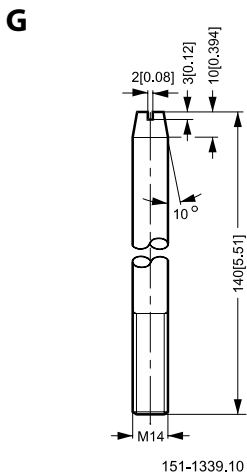
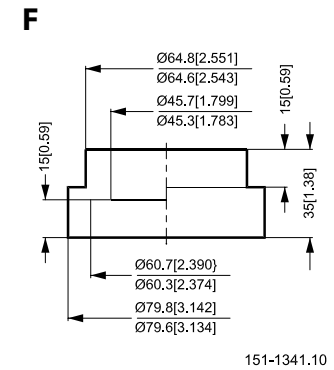
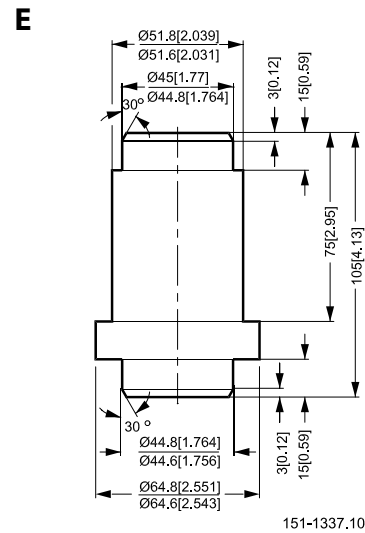
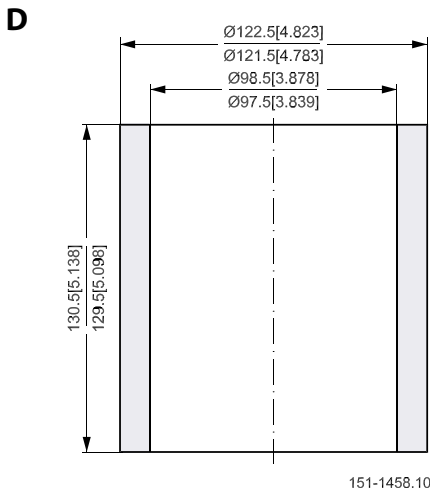
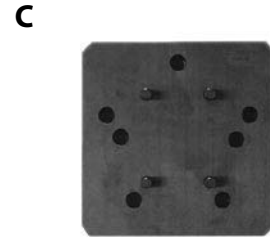
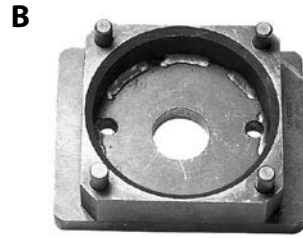
OMT FL and OMT FH

151-1457.10



Brake unit items ↔ Motor unit items

151-1456.10



A: Main holding tool for OMT FX, OMT FL and OMT FH
Code no SJ 151-9000-1

B: Holding tool for OMT FL and OMT FH code no SJ 151B9000-1

C: Holding tool for OMT FX code no SJ 151B9080-1

D: Tube for output shaft removal for OMT FL/FH code no SJ 151-9076-3

E: Mandrel for backstop for fitting shaft seal code no SJ 151B9000-13/14

F: Backstop for fitting OMT FX/FL/FH dust seal ring. Code no SJ 151B9000-15

G: Guide bolts (2off)

H: Mandrel for removal of balance plate

I: Large bearing mandrel for OMT FL and OMT FH Code no SJ 151-9076-1

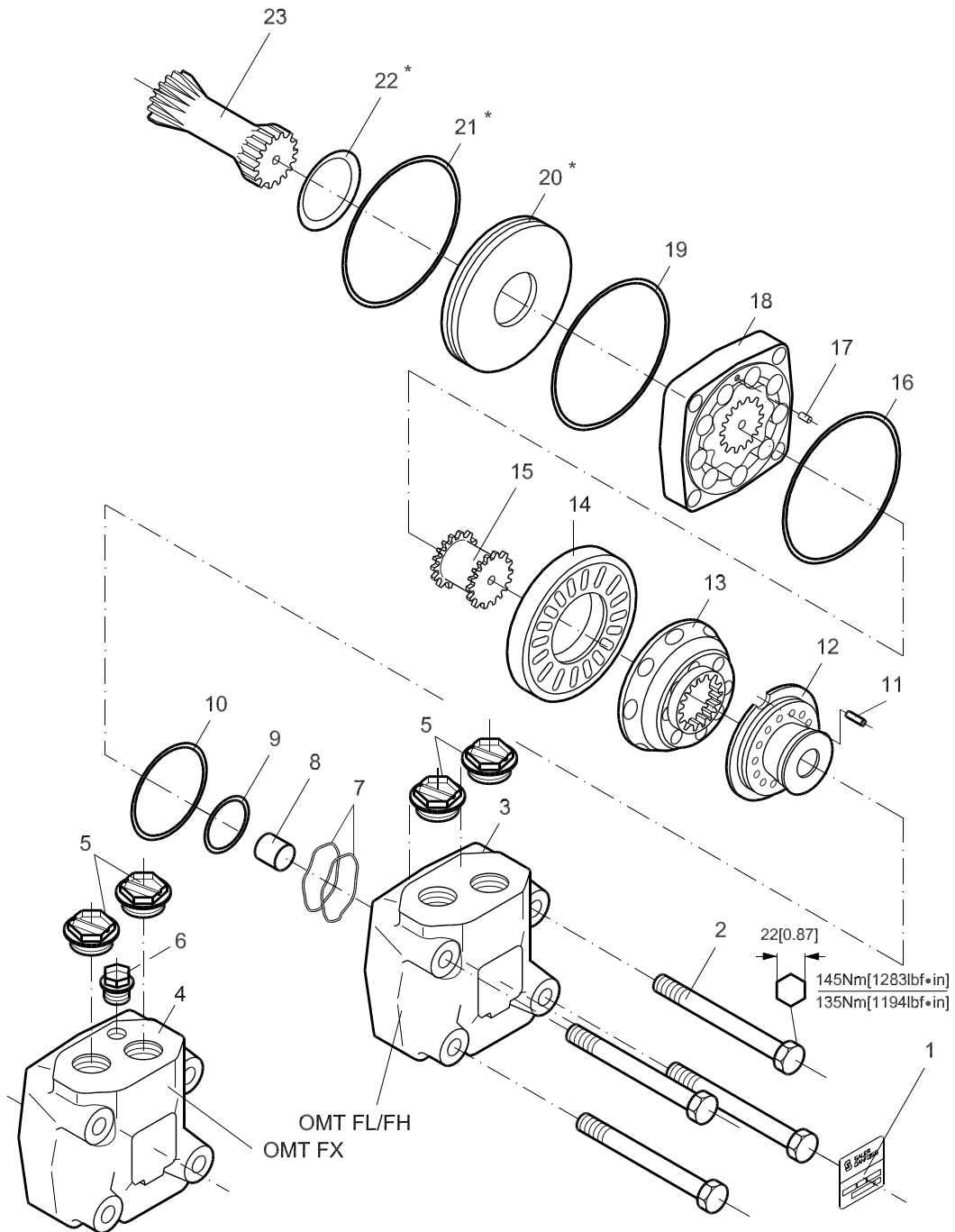
J: Small bearing mandrel for OMT FX / FL / FH Code no SJ 151-9076-2

L: Bearing puller (e.g. Belzer Type Code no. 108-264).



Orbital motor OMT FX, OMT FL and OMT FH
Service and Parts Manual
Notes

**EXPLODED VIEW OMT FX,
OMT FL AND OMT FH**



* OMT FL and OMT FH only

SPARE PARTS LIST
OMT FX, OMT FL AND
OMT FH

Item	Spare parts	Stock per 100 motors		
		Code No.	Number per motor	
1	Name plate	151A0407	1	10
2	Screw M14 OMT 160, 200 F; l = 120 mm [4.72 in] OMT 250 F; l = 130 mm [5.12 in] OMT 315 F; l = 140 mm [5.51 in] OMT 400 F; l = 150 mm [5.90 in] OMT 500 F; l = 160 mm [6.30 in]	681X1118 681X1120 681X1123 681X1127 681X1411	4	12
3	Valve housing OMT FL, OMT FH	151B1719	1	2
4	Valve housing OMT FX	151B1747	1	2
5	Main port plug (plastic)	633X0071	2	25
6	Drain port plug (plastic) OMT FX	633X0028	1	12
7	Spring washer 33 • 29.1 • 0.5 mm [1.30 • 1.15 • 0.02 in]	684X0087	2	10
8	Spacer	151B1311	1	2
9	O-ring 40 • 2 mm [1.57 • 0.08 in] NBR	633B1378	1	*
10	O-ring 63 • 2 mm [2.48 • 0.08 in] NBR	633B1365	1	*
11	Guide pin Ø5 l = 14 mm [0.55 in]	682L9105	1	5
12	Balance plate	151B1483	1	3
13	Disc valve	151B1072	1	3
14	Channel plate	151B1043	1	5
15	Valve drive	151B1309	1	5
16	O-ring 96 • 3 mm [3.78 • 0.12 in] NBR	633B1366	1	*
17	Guide pin Ø4 L = 10 mm [0.39 in]	682L2006	1	5
18	Gearwheel set OMT 160 F w = 20 mm [0.79 in] 151B1033 OMT 200 F w = 25 mm [0.98 in] 151B1034 OMT 250 F w = 31 mm [1.22 in] 151B1035 OMT 315 F w = 40 mm [1.57 in] 151B1087 OMT 400 F w = 51 mm [2.01 in] 151B1088 OMT 500 F w = 65 mm [2.56 in] 151B1062		1	5
19	O-ring 96 • 3 mm [3.78 • 0.12 in] NBR	633B1366	1	*
20	Intermediate plate OMT FL, OMT FH	151B1737	1	3
21	O-ring, OMT FL and OMT FH 96 • 3 mm [3.78 • 0.12 in] NBR	633B1366	1	*
22	Conical seal ring OMT FL, OMT FH	633B9022	1	*
23	Cardan shaft OMT 160 F l = 104 mm [4.09 in] 151B1346 OMT 200 F l = 108 mm [4.25 in] 151B1347 OMT 250 F l = 114 mm [4.49 in] 151B1348 OMT 315 F l = 124 mm [4.88 in] 151B1655 OMT 400 F l = 134.5 mm [5.30 in] 151B1657 OMT 500 F l = 148.5 mm [5.85 in] 151B1537		1	3

* Included in set of seals. See under brake module
NBR: (Buna N, Perbunan)

DISMANTLING

General

Disassemble the motor module by dismantling the individual item in numerical order, see *drawing* page 6. When dismantling the items 3, 4, 12 and 18 follow instructions below.

Item	Part to remove	Comments
3 or 4	Valve housing	Lift off valve housing carefully as a unit, holding your fingers under the channel plate (Item no. 14)
12	Balance plate	Fill in oil in the spacer hole and use the Ø18.4 [0.72 in] mandrel (<i>tool H</i> , page 4) as a piston to press up the balance plate.
18	Gearwheel set	Hold fingers under the gearwheel set to prevent the parts from dropping out.

**CLEANING, INSPECTION,
 REPLACEMENT AND
 LUBRICATION**

Cleaning Clean all parts carefully.

Inspection and replacement

Check all parts carefully and make any replacements necessary. All sealing parts are always replaced during a repair.

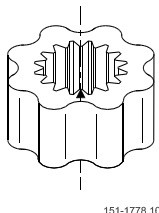
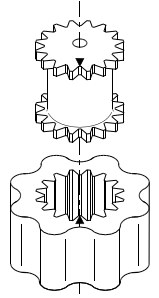
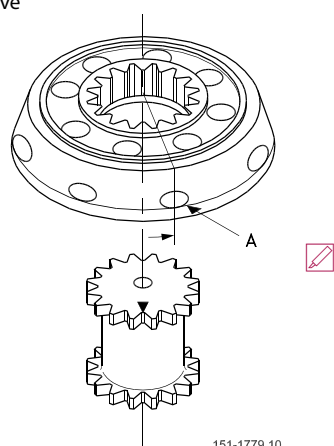
Lubrication

Before assembly, lubricate all parts with hydraulic oil, and grease rubber parts with vaseline.

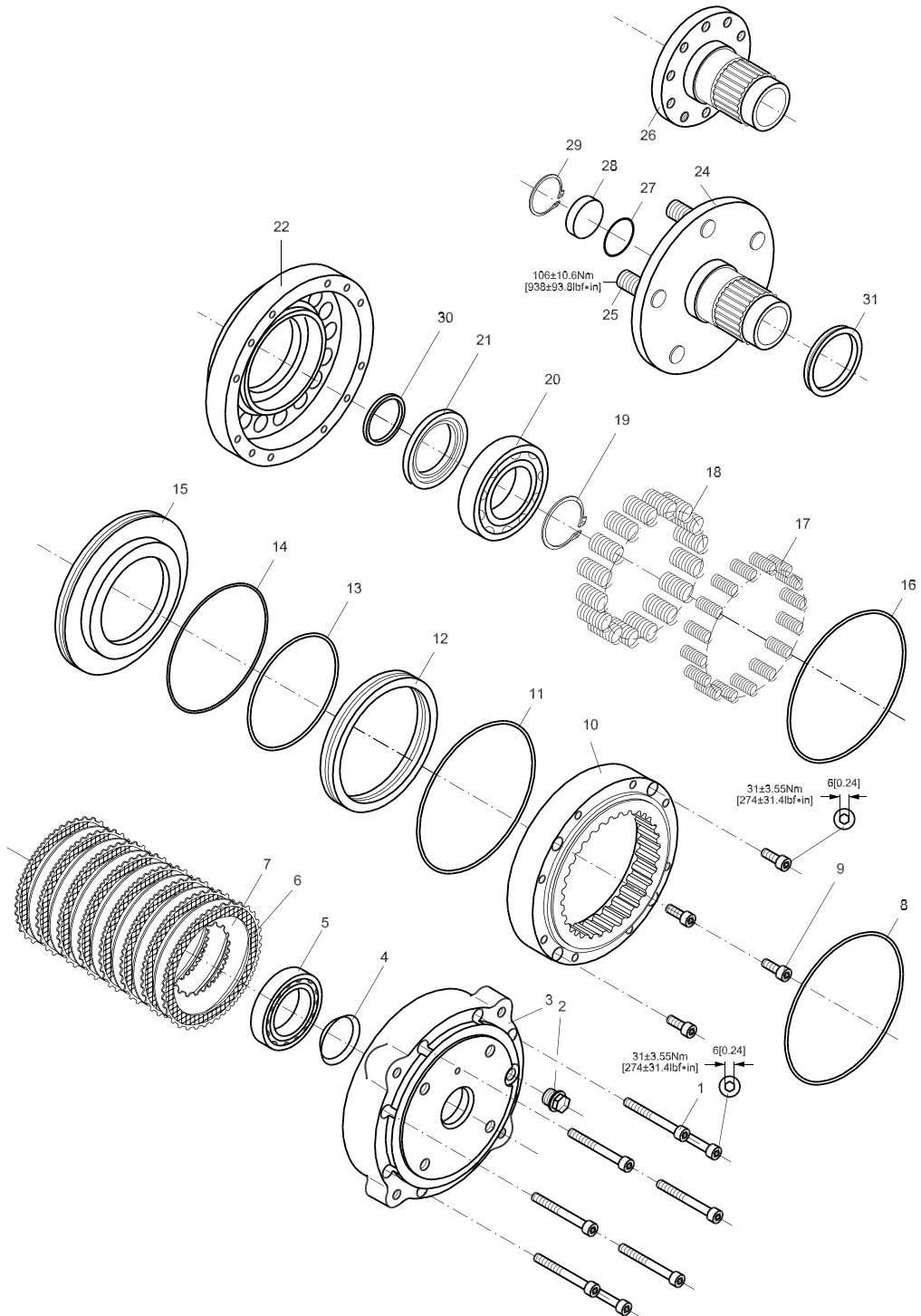
ASSEMBLING

General

Reassemble the motor module by fitting the individual item on the assembled brake module in reversed numerical order starting an item 23 (see drawing page 6). When fitting the items 18, 15, 13, 8, 6 and 5 follow instructions below.

Item	Part to remove	Comments
18	Gearwheel set  151-1778.10	Fill the splines area of the output shaft with hydraulic oil and fit two guide bolts (tool G) in the bearing housing. Hold fingers under the gearwheel set to prevent parts from dropping out. Hole (6 mm [0.24 in]) to be aligned with hole in the bearing housing. Mark the gearwheel set rotor at the point where the top of a spline tooth is opposite the bottom of a tooth in the external rotor teeth (see drawing).
15	Valve drive  151-1777.10	Mark the bottom of a spline tooth on the valve drive. Line up mark on rotor and valve drive.
13	Disc valve  151-1779.10	Align mark on valve drive with a hole in the outer rim. (A on drawing). Turn disc valve counter clockwise until splines in the two parts engage.
8	Spacer	Grease spacer with vaseline to prevent the spacer from dropping out.
5	Main port plug	Fill motor with oil before plugging
6	Drain port plug	

EXPLODED VIEW OMT FX



SPARE PARTS OMT FX

Item	Spare parts	Stock per 100 motors		
		Number per motor		
		Code No.		
1	Screw M8, l = 60 mm [2.36 in]	681X0098	8	24
2	Plastic plug	633X0028	1	12
3	Flange	151B1753	1	2
4	Blue seal ring	633B9022	1	*
5	Bearing (small) $D_{out} = 80, D_{in} = 50$	981X1088	1	5
6	Outer brake disc	151B1759	8	24
7	Inner brake disc	151B1758	7	21
8	O-ring 160 • 3.5 mm [6.30 • 1.40 in] NBR	633B0123	1	*
9	Screw M8, l = 20 mm [0.79 in]	681X0288	4	12
10	Intermediate rim	151B1760	1	2
11	O-ring 160 • 3.5 mm [6.30 • 1.40 in] NBR	633B0123	1	*
12	Ring	151B1757	1	3
13	O-ring 122.8 • 3.5 mm [4.83 • 1.40 in] NBR	633B0125	1	*
14	O-ring 136 • 2.6 mm [5.35 • 1.40 in]	633B0124	1	*
15	Piston	151B1755	1	3
16	O-ring 160 • 3.5 mm [6.30 • 1.40 in] NBR	663B0123	1	*
17	Spring $L_0 = 25.9; d = 2.2; D_{out} = 12.4$ mm [0.49 in]	663X6042	16	48
18	Spring $L_0 = 28.8; d = 2.8; D_{out} = 18.8$ mm [0.74 in]	633X6043	16	48
19	Snap ring 55 • 2 mm [2.17 • 0.08 in]	682L4229	1	3
20	Bearing (large) $D_{out} = 100; D_{in} = 55$ mm [2.17 in]	981X1317	1	5
21	Shaft seal 60 • 7 mm [2.36 • 0.28 in] NBR	633B3172	1	*
22	Bearing housing	151B1751	1	2
24	Wheel bolt shaft	151B1487	1	5
25	Wheel bolts	151B1807	5	15
26	Thread hole shaft	151B1486	1	5
27	O-ring 35 • 2 mm [1.57 • 0.08 in]	633B1364	2	*
28	Plug	151B5427	1	3
29	Snap ring 40 • 1.57 mm [1.57 • 0.07 in]	682L4245	1	
30	Dust seal ring wheel, bolt version $\varnothing 60 \cdot 4$ mm [2.36 • 0.16 in]	633B3205	1	10
31	V-ring, wheel bolt version $\varnothing 64 \cdot 9$ mm [2.52 • 0.35 in]	633B0452	1	10

* Included in set of seals. NBR: (Buna N, Perbunan)

**SPARE PARTS OMT FX
 (CONTINUED)**

Item	Spare parts	Stock per 100 motors		
		Number per motor		
		Code No.		
A	Set of seals NBR <i>Brake module items (see page 11) :</i>	151B0152		10
4	Blue seal ring 633B9022			
8	O-ring 160 • 3.5 mm [6.30 • 1.40 in] 633B0123			
11	O-ring 160 • 3.5 mm 6.30 • 1.40 in] 633B0123			
13	O-ring 122.8 • 3.5 mm [4.83 • 1.40 in] 633B0125			
14	O-ring 136 • 2.6 mm [5.35 • 1.40 in] 633B0124			
16	O-ring 122.8 • 3.5 mm [4.83 • 1.40 in] 633B0123			
21	Shaft seal 633B3172			
27	O-ring 35 • 2 mm [1.57 • 0.08 in] 633B1364			
	<i>Motor module items (see page 7)</i>			
9	O-ring 40 • 2 mm [1.57 • 0.08 in] 633B1378			
10	O-ring 63 • 2 mm [2.48 • 0.08 in] 633B1365			
16	O-ring 96 • 3 mm [3.78 • 0.12 in] 633B1366			
19	Oring 96 • 3 mm [3.78 • 0.12 in] 633B1366			

NBR: Buna N, Perbunan

**DISMANTLING OF BRAKE
 MODULE OMT FX**

General

Disassemble the brake module by dismantling the individual item in numerical order, see drawing page 10. When dismantling the items 5 follow instructions below.

Item	Part to remove	Comments
5	Bearings	Use bearing puller (tool L, page 4)


Cleaning

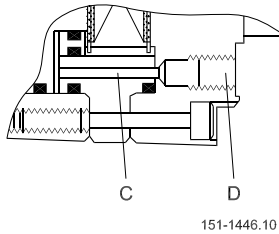
Cleaning, inspection, replacement and lubrication see page 8

**ASSEMBLY OF BRAKE
 MODULE OMT FX**

General

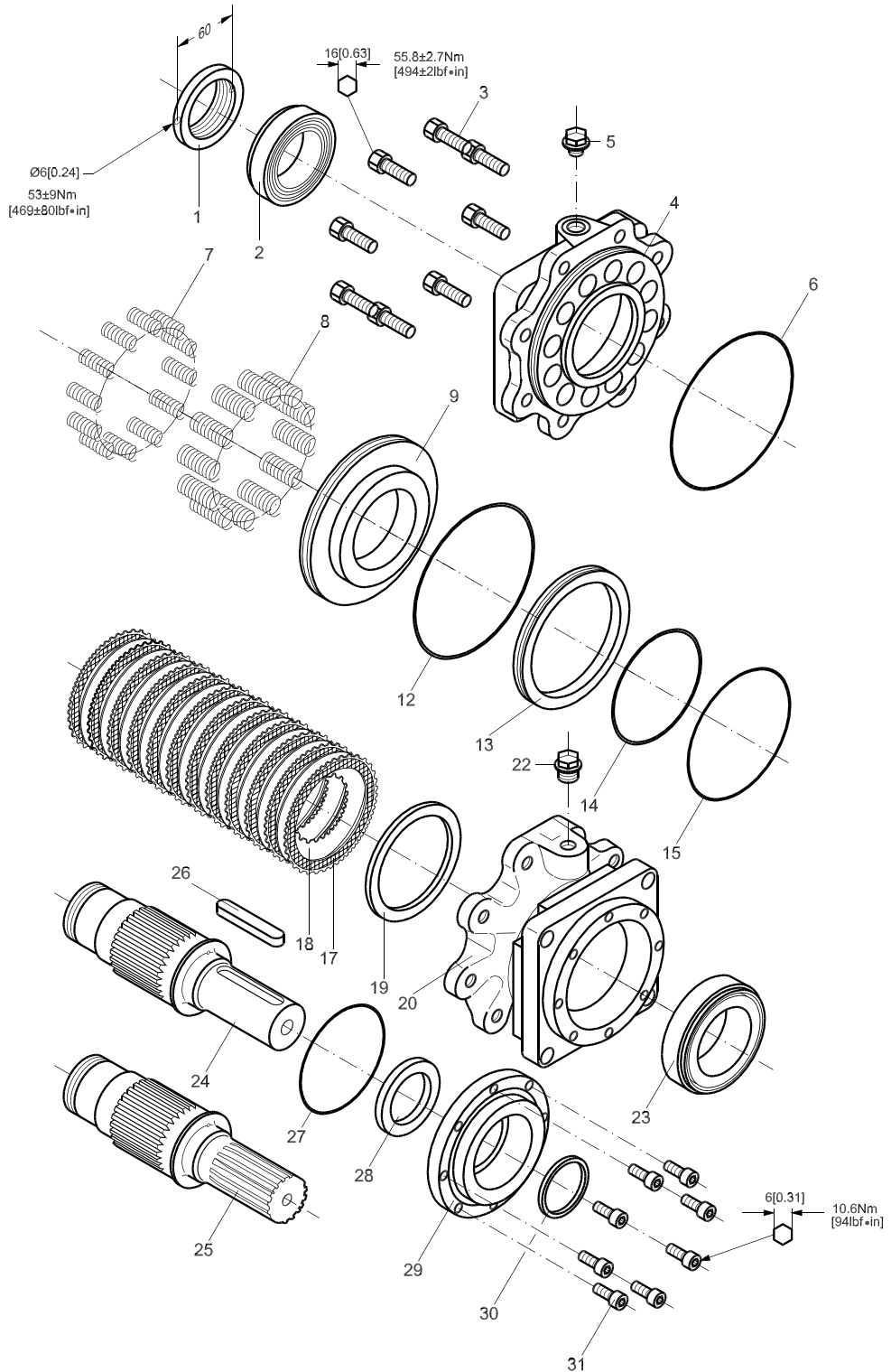
Reassemble the brake module by fitting the individual item in reversed numerical order starting at item 29 (see drawings page 10). When fitting the items 5, 20 and 3 follow instructions below.

Item	Part to remove	Comments
5, 20	Bearings	Use a hydraulic press to fit bearings and press on inner ring. Force:  2000 N [17701.5 lbf·in]
3	Flange	Position brake release hole of flange (D) in line with brake release hole of intermediate ring (C) - see sectional drawing page 3.



151-1446.10

**EXPLODED VIEW
OMT FL**

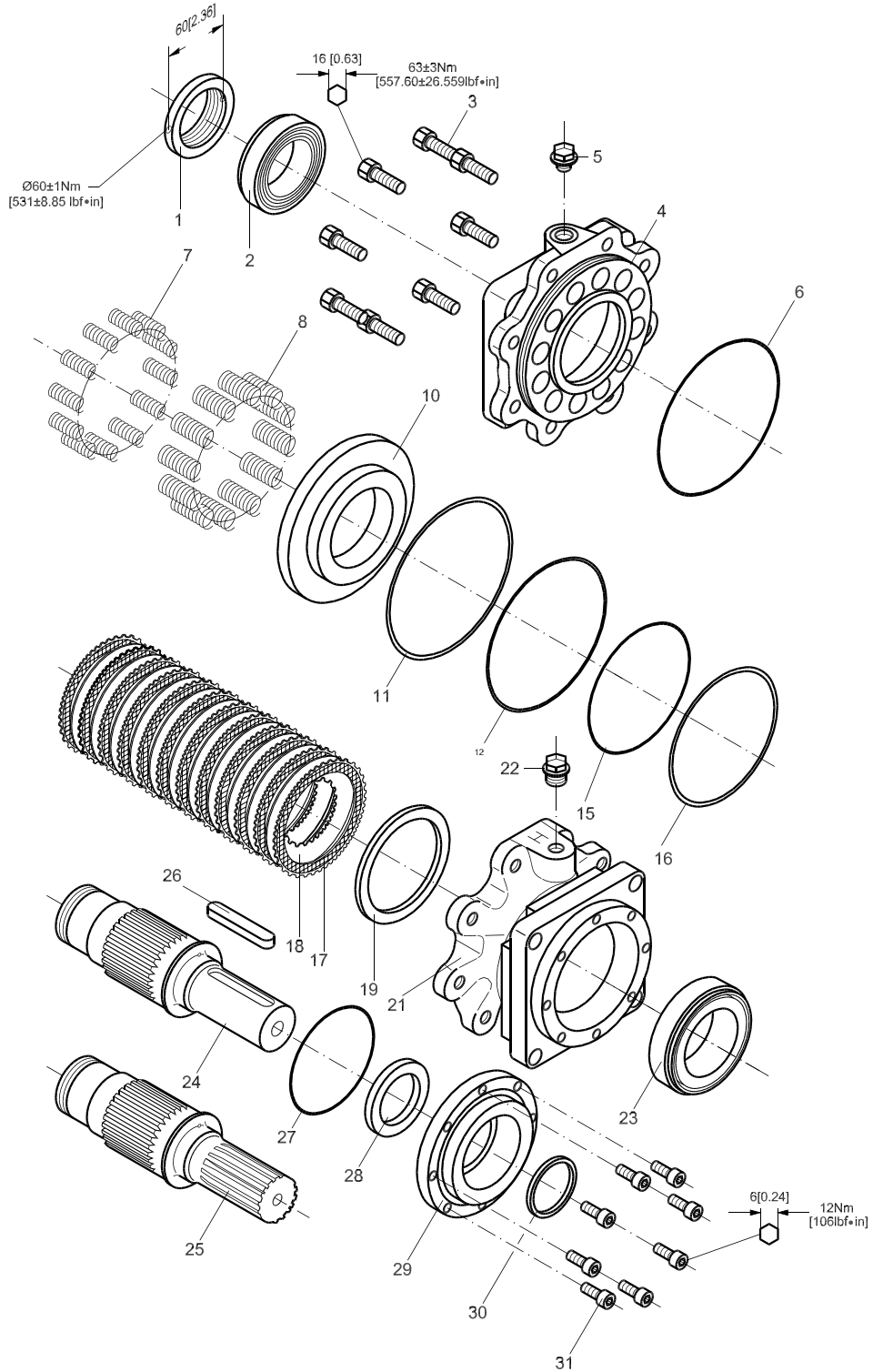


SPARE PARTS OMT FL

Item	Spare parts	Stock per 100 motors		
		Code No.	Number per motor	
1	Bearing nut	151B1314	1	5
2	Bearing (small) $D_{out} = 80, D_{in} = 50$	981X0047	1	5
3	Screw $M10 \text{ l} = 30 \text{ mm [1.18 in]}$	681X0032	8	24
4	Bearing housing	151B1733	1	2
5	Plastic plug	633X7009	1	12
6	O-ring $137 \cdot 3 \text{ mm [5.39} \cdot 0.12 \text{ in]} \text{ NBR}$	633B0095	1	*
7	Spring $L_0 = 35.7; d = 3.0; D_{out} = 18.8 \text{ mm [0.74 in]}$	663X6036	12	36
8	Spring $L_0 = 30.8; d = 2.2; D_{out} = 12 \text{ mm [0.47 in]}$	663X6035	12	36
9	Piston OMT FL	151B1738	1	3
12	O-ring $135 \cdot 4 \text{ mm [5.31} \cdot 0.16 \text{ in]} \text{ NBR}$	633B0106	1	*
13	Ring OMT FL	151B1740	1	3
14	O-ring OMT FL $100 \cdot 4 \text{ mm [3.94} \cdot 0.16 \text{ in]} \text{ NBR}$	633B0096	1	*
15	O-ring OMT FL $115 \cdot 2.5 \text{ mm [4.53} \cdot 0.10 \text{ in]} \text{ NBR}$	633B1452	1	*
17	Outer brake disc	151B1743	12	36
18	Inner brake disc	151B1742	11	33
19	Spacer disc	151B1741	1	3
20	Bearing housing OMT FL	151B1838	1	2
22	Plastic plug	633X0028	1	12
23	Bearing (large) $D_{out} = 95, D_{in} = 60$	981X0048	1	5
24	Cylindrical shaft	151B1726	1	5
25	Splined shaft	151B1727	1	5
26	Parallel key $70 \cdot 12 \cdot 8 \text{ mm [2.76} \cdot 0.47 \cdot 0.31 \text{ in]}$	682L8014	1	5
27	O-ring $95 \cdot 2.5 \text{ mm [3.74} \cdot 0.10 \text{ in]} \text{ NBR}$	633B1471	1	*
28	Shaft seal $45 \cdot 7 \text{ mm [1.77} \cdot 0.28 \text{ in]} \text{ NBR}$	633B3201	1	*
29	Front cover	151B1736	1	3
30	Dust seal ring $45 \cdot 4 \text{ mm [1.77} \cdot 0.16 \text{ in]}$	633B3202	1	*
31	Screw $M6 \text{ l} = 20 \text{ mm [0.79 in]}$	681X1521	8	24
A	Set of seals NBR	151B0153		10
	<i>Brake module items</i>			
6	O-ring $137 \cdot 3 \text{ mm [5.39} \cdot 0.12 \text{ in]}$	633B0095		
12	O-ring $135 \cdot 4 \text{ mm [5.31} \cdot 0.16 \text{ in]}$	633B0106		
14	O-ring $100 \cdot 4 \text{ mm [3.94} \cdot 0.16 \text{ in]}$	633B0096		
15	O-ring $115 \cdot 2.5 \text{ mm [4.53} \cdot 0.10 \text{ in]}$	633B1452		
27	O-ring $95 \cdot 2.5 \text{ mm [3.74} \cdot 0.10 \text{ in]}$	633B1471		
28	Shaft seal	633B3201		
30	Dust seal ring	633B3202		
	<i>Motor module items (see page 7):</i>			
9	O-ring $40 \cdot 2 \text{ mm [1.57} \cdot 0.08 \text{ in]}$	633B1378		
10	O-ring $63 \cdot 2 \text{ mm [2.48} \cdot 0.08 \text{ in]}$	633B1365		
16	O-ring $96 \cdot 3 \text{ mm [3.78} \cdot 0.12 \text{ in]}$	633B1366		
19	Oring $96 \cdot 3 \text{ mm [3.78} \cdot 0.12 \text{ in]}$	633B1366		
21	Oring $95 \cdot 2.5 \text{ mm [3.74} \cdot 0.10 \text{ in]}$	633B1366		
22	Conical seal ring	633B9022		

* Included in set of seals NBR: Buna N, Perbunan

**EXPLODED VIEW
OMT FH**



151-1463.10

SPARE PARTS OMT FH

Item	Spare parts	Stock per 100 motors		
		Code No.	Number per motor	
1	Bearing nut	151B1314	1	5
2	Bearing (small) $D_{out} = 80, D_{in} = 50$	981X0047	1	5
3	Screw $M10 \text{ l} = 30 \text{ mm [1.18 in]}$	681X0032	8	24
4	Bearing housing	151B1733	1	2
5	Plastic plug	633X7009	1	12
6	O-ring $137 \cdot 3 \text{ mm [5.39} \cdot 0.12 \text{ in]}$ NBR	633B0095	1	*
7	Spring $L_0 = 35.7; d = 3.0; D_{out} = 18.8 \text{ mm [0.74 in]}$	663X6036	12	36
8	Spring $L_0 = 30.8; d = 2.2; D_{out} = 12 \text{ mm [0.47 in]}$	663X6035	12	36
10	Piston OMT FH	151B1746	1	3
11	Back-up ring, OMT FH $135 \cdot 1.5 \text{ mm [5.31} \cdot 0.06 \text{ in]}$	633L9669	1	*
12	O-ring $135 \cdot 4 \text{ mm [5.31} \cdot 0.16 \text{ in]}$ NBR	633B0106	1	*
15	O-ring OMT FH $115 \cdot 2.5 \text{ mm [4.53} \cdot 0.10 \text{ in]}$ NBR	633B0105	1	*
16	Back-up ring, OMT FH $115 \cdot 1.5 \text{ mm [4.53} \cdot 0.06 \text{ in]}$	633L9670	1	*
17	Outer brake disc	151B1743	12	36
18	Inner brake disc	151B1742	11	33
19	Spacer disc	151B1741	1	3
21	Bearing housing	151B1839	1	2
22	Plastic plug	633X0028	1	12
23	Bearing (large) $D_{out} = 95, D_{in} = 60$	981X0048	1	5
24	Cylindrical shaft	151B1726	1	5
25	Splined shaft	151B1727	1	5
26	Parallel key $70 \cdot 12 \cdot 8 \text{ mm [2.76} \cdot 0.47 \cdot 0.31 \text{ in]}$	682L8014	1	5
27	O-ring $95 \cdot 2.5 \text{ mm [3.74} \cdot 0.10 \text{ in]}$ NBR	633B1471	1	*
28	Shaft seal $45 \cdot 7 \text{ mm [1.77} \cdot 0.28 \text{ in]}$ NBR	633B3201	1	*
29	Front cover	151B1736	1	3
30	Dust seal ring $45 \cdot 4 \text{ mm [1.77} \cdot 0.16 \text{ in]}$	633B3202	1	*
31	Screw $M6 \text{ l} = 20$	681X1521	8	24
A	Set of seals NBR <i>Brake module items</i>	151B0154		10
6	O-ring $137 \cdot 3 \text{ mm [5.39} \cdot 0.12 \text{ in]}$	633B0095		
11	Back-up ring $135 \cdot 1.5 \text{ mm [5.31} \cdot 0.06 \text{ in]}$	633L9669		
12	O-ring $135 \cdot 4 \text{ mm [5.31} \cdot 0.16 \text{ in]}$	633B0106		
15	O-ring $115 \cdot 2.5 \text{ mm [4.53} \cdot 0.10 \text{ in]}$	633B0105		
16	Back-up ring $115 \cdot 1.5 \text{ mm [4.53} \cdot 0.06 \text{ in]}$	633L9670		
27	O-ring $95 \cdot 2.5 \text{ mm [3.74} \cdot 0.10 \text{ in]}$	633B1471		
28	Shaft seal	633B3201		
30	Dust seal ring	633B3202		
	<i>Motor module items (see page 7):</i>			
9	O-ring $40 \cdot 2 \text{ mm [1.57} \cdot 0.08 \text{ in]}$	633B1378		
10	O-ring $63 \cdot 2 \text{ mm [2.48} \cdot 0.08 \text{ in]}$	633B1365		
16	O-ring $96 \cdot 3 \text{ mm [3.78} \cdot 0.12 \text{ in]}$	633B1366		
19	O-ring $96 \cdot 3 \text{ mm [3.78} \cdot 0.12 \text{ in]}$	633B1366		
21	O-ring $96 \cdot 3 \text{ mm [3.74} \cdot 0.10 \text{ in]}$	633B1366		
22	Conical seal ring	633B9022		


* Included in set of seals NBR: Buna N, Perbunan

**DISMANTLING OF BRAKE
 MODULE OMT FL AND
 OMT FH**

General

Disassemble the brake module by dismantling the individual item in numerical order, see drawings page 14 and 16.

When dismantling the bearings, items 2 an 23 follow instructions below.

Item	Part to remove	Comments
2, 23	Bearings	Remove front cover, item 29, and bearing nut, item 1. Dismantle bearing, item 2, by pressing output shaft forwards out of bearing housing by means of the cardan shaft (use tool D). Dismantle bearing, item 23, by pressing on inner ring. Use a hydraulic press for dismantling. 



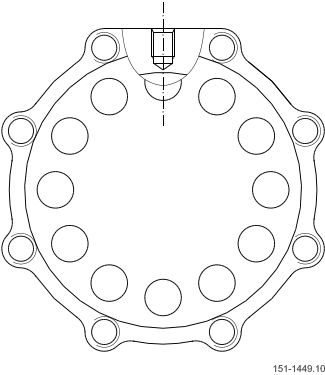


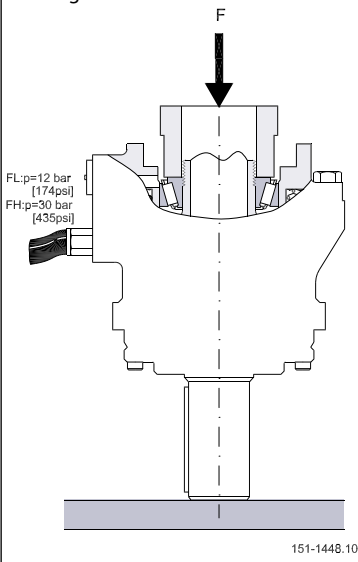
Cleaning

Cleaning, inspection, replacement and lubrication, see page 8

**ASSEMBLY OF BRAKE
 MODULE OMT FL AND
 OMT FH**

General

Reassemble the brake module by fitting the individual parts as shown on drawings see page 14 or 16. When fitting the items 30, 28, 23, 10, 9, 2 and 1 follow instructions below.

Item	Part to remove	Comments
28	Shaft seal	Grease shaft seal and fit it in the front cover using tool E.
30	Dust seal ring	Grease dust seal ring and fit it in the front using the tools E and F.
23	Bearing	Press the large bearing by means of a hydraulic press  on the inner ing. Force  3500 N [30977.63 lbf·in]
10, 9	Piston	Fit the piston with a spring hole opposite to the brake release port in bearing housing (20 or 21)
		
2	Bearing	In order to avoid backlash the housing must be rotated while pressing  on the small bearing. Pressurize the brake release port and press the inner ring of the bearing with increasing force until obtaining a force  of 3500 N [30977.63 lbf·in]. Turn the housing to and fro by hand while increasing the force. Remove the brake release pressure before removing the force acting on the bearing.
		
1	Bearing nut	After tightening the bearing nut it is to be secured in the appropriate groove by means of blows from a mandrel and hammer.



OUR PRODUCTS

Hydrostatic transmissions
Hydraulic power steering
Electric power steering
Closed and open circuit axial piston pumps and motors
Gear pumps and motors
Bent axis motors
Radial piston motors
Orbital motors
Transit mixer drives
Planetary compact gears
Proportional valves
Directional spool valves
Cartridge valves
Hydraulic integrated circuits
Hydrostatic transaxles
Integrated systems
Fan drive systems
Electrohydraulics
Micro controllers and software
Electric motors and inverters
Digital electronics and software
Joystick and control handles
Displays
Sensors

Sauer-Danfoss Mobile Power and Control Systems – Market Leaders Worldwide

Sauer-Danfoss is a comprehensive supplier providing complete systems to the global mobile market.

Sauer-Danfoss serves markets such as agriculture, construction, road building, material handling, municipal, forestry, turf care, and many others.

We offer our customers optimum solutions for their needs and develop new products and systems in close cooperation and partnership with them.

Sauer-Danfoss specializes in integrating a full range of system components to provide vehicle designers with the most advanced total system design.

Sauer-Danfoss provides comprehensive worldwide service for its products through an extensive network of Authorized Service Centers strategically located in all parts of the world.

Sauer-Danfoss (US) Company
2800 East 13th Street
Ames, IA 50010, USA
Phone: +1 515 239-6000, Fax: +1 515 239 6618

Sauer-Danfoss GmbH & Co. OHG
Postfach 2460, D-24531 Neumünster
Krokamp 35, D-24539 Neumünster, Germany
Phone: +49 4321 871-0, Fax: +49 4321 871 122

Sauer-Danfoss ApS
DK-6430 Nordborg, Denmark
Phone: +45 7488 4444, Fax: +45 7488 4400